

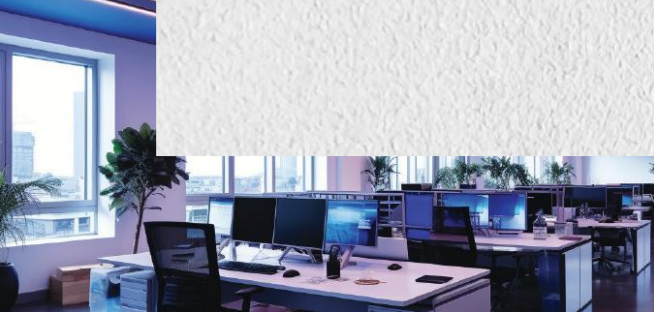


# EXCEL

EXEMPLARY SOLUTIONS  
SINCE 1983









# NETZERO

# 2030



Excel's Net Zero 2030 mission is a bold commitment aimed at significantly reducing carbon footprint and promoting sustainability across all operations. By setting a target to achieve net-zero emissions by 2030, Excel is taking proactive steps to address climate change and its impact on the environment. This mission encompasses a comprehensive strategy that includes transitioning to renewable energy sources, enhancing energy efficiency, and implementing innovative technologies. Excel is dedicated to collaborating with stakeholders, including employees, customers, and suppliers, to foster a culture of sustainability and ensure that everyone plays a role in this critical initiative.

The company is also committed to transparency, regularly reporting on its progress and challenges in achieving its goals. By engaging with local communities and promoting awareness about the importance of sustainability, Excel aims to inspire others to join the movement towards a greener future. Through these efforts, Excel not only seeks to minimize its environmental footprint but also to contribute positively to the global fight against climate change, ensuring a healthier planet for future generations.



## Introduction to Excel's Product Offerings:

At Excel, we are dedicated to providing innovative and energy-efficient solutions that enhance the way you live and work. Our comprehensive range of products includes advanced LED lighting, reliable UPS systems, high-performance batteries, and cutting edge solar solutions. We understand the importance of sustainability and strive to deliver quality solutions that not only reduce energy consumption but also promote a greener future. With a commitment to excellence and continuous innovation, Excel is your trusted partner in achieving energy efficiency and reliability across industries.



Scan for More Info



## Commercial Lighting



Excel's LED office lighting solutions are designed to create a productive and comfortable work space environment. Offering energy efficiency and bright, natural illumination, our LED improves overall workplace aesthetics. With sleek designs and flexible lighting options, these fixtures are ideal for open offices, conference rooms, and workstations. Excel's LED office lighting solutions ensure lower energy consumption and maintenance costs, while providing a modern and professional atmosphere in any office space.



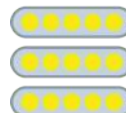
**Energy-efficient solutions  
for workspaces**



Excel's lighting for stores and showrooms is tailored to showcase products in the best light. With high color rendering and adjustable brightness, our LED solutions create inviting, vibrant displays that draw attention to key products, enhancing the shopping experience. Ideal for retail environments, boutiques, and showrooms, these lights offer energy savings without compromising on quality. Excel's LED store and showroom lighting ensures products look their best, helping to increase foot traffic and sales while reducing operational costs.



**Creates ambiance in  
hotels and restaurants**



**Customizable solutions  
for various settings**

Transform your hotels and restaurants with our exceptional hospitality lighting solutions. At Excel, we understand that ambiance plays a crucial role in guest experience. Our innovative lighting designs create inviting atmospheres that enhance the aesthetic appeal of any space. Whether it's a cozy dining area or a luxurious hotel lobby, our customizable solutions cater to diverse settings and preferences. With energy efficient options that reduce operational costs, our hospitality lighting not only elevates the mood but also aligns with your commitment to sustainability. Illuminate your establishment with Excel's LED and leave a lasting impression on your guests.



**Enhances learning environments  
in schools and universities**



**Energy-saving options for  
classrooms and auditoriums**

Illuminate the future of learning with our advanced lighting solutions for educational institutions. At Excel, we understand that effective lighting is essential for enhancing learning environments in schools and universities. Our energy-saving LED options provide optimal brightness and clarity in classrooms and auditoriums, fostering focus and engagement among students. By creating well-lit spaces that reduce eye strain and improve concentration. Choose Excel for innovative lighting solutions that promote a productive and inspiring educational experience while also contributing to sustainability.





**Supports patient well-being  
and staff efficiency**



**Specialized lighting  
for medical facilities**

At Excel, we recognize the vital role that lighting plays in healthcare environments. Our specialized healthcare lighting solutions are designed to support patient well-being and enhance staff efficiency. By providing optimal illumination in medical facilities, we create a calming atmosphere that promotes healing and comfort for patients. Our energy-efficient LED options ensure that healthcare providers can focus on delivering quality care without the distraction of inadequate lighting. With customisable designs, Excel is committed to improving the healthcare experience for both patients and professionals alike.



**Weather-resistant  
and durable designs**

Excel's LED lighting for stores and showrooms is tailored to showcase products in the best light. With high color rendering and adjustable brightness, our LED solutions create inviting, vibrant displays that draw attention to key products, enhancing the shopping experience. Ideal for retail environments, boutiques, and showrooms, these lights offer energy savings without compromising on quality. Excel's LED store and showroom lighting ensures products look their best, helping to increase foot traffic and sales while reducing operational costs.



## Residential Lighting



Excel's Residential Lighting solutions offer innovative and energy-efficient options to enhance the ambiance and functionality of your home. Our extensive range of lighting products includes stylish fixtures, smart lighting systems, and customizable designs that cater to various tastes and needs. With a focus on sustainability, our solutions not only illuminate your spaces but also reduce energy consumption, helping you save on utility bills. Whether you're looking to create a cozy atmosphere in your living room or brighten up your kitchen, Excel's Residential Lighting solutions provide the perfect blend of aesthetics and efficiency, transforming your home into a beautifully lit sanctuary.

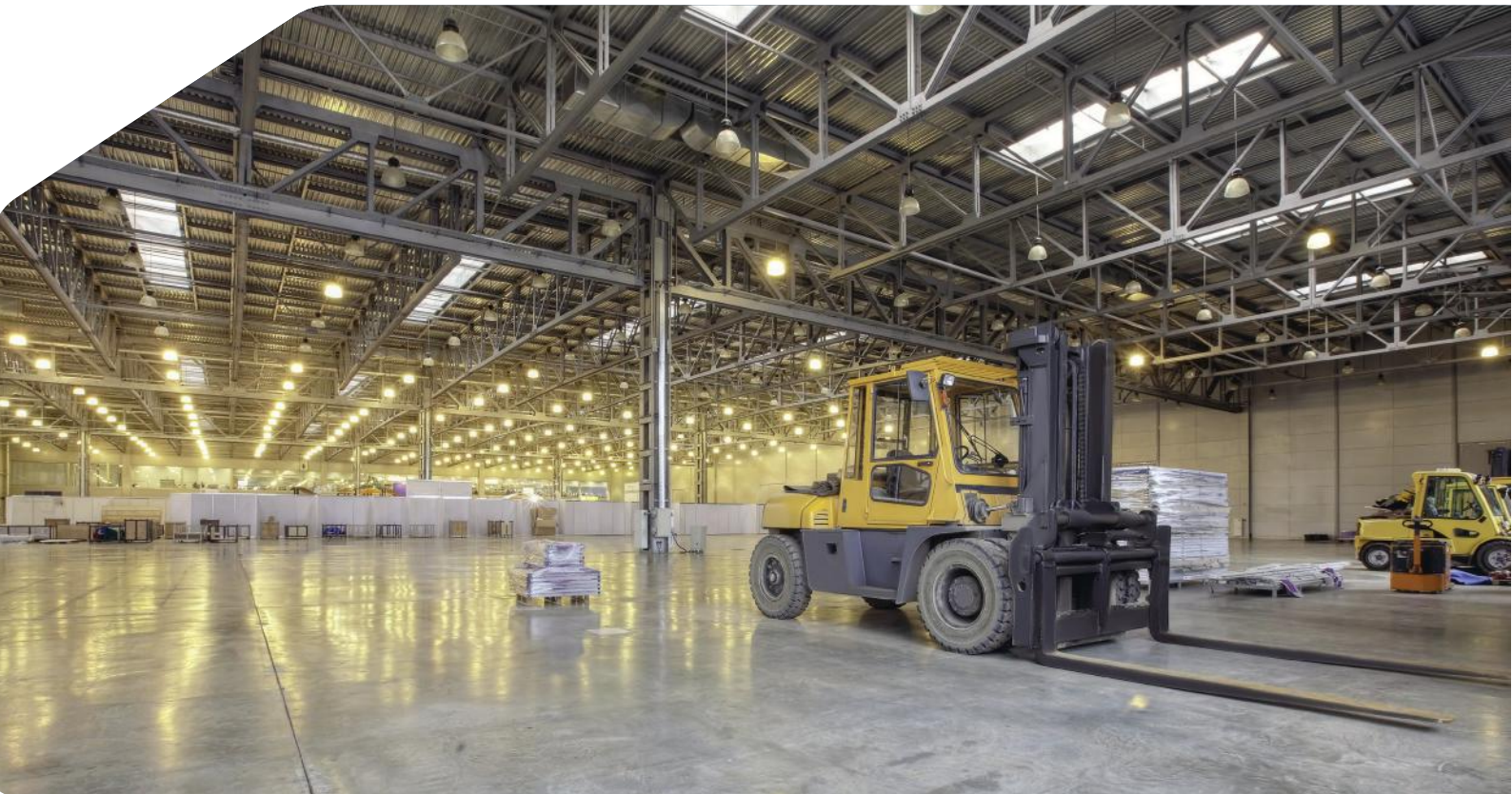


**Energy storage  
solutions for homes**



**Supports renewable  
energy systems**

# Industrial Lighting



Excel's LED industrial lighting solutions provide high-performance, energy-efficient illumination for a wide range of industrial applications. Designed for durability, these lights offer superior brightness, reduced energy costs, and longer life spans compared to traditional lighting. Ideal for warehouses, manufacturing facilities, and outdoor industrial spaces, our LED lights enhance visibility, safety, and productivity. With robust designs and reliable performance, Excel's LED lighting is engineered to withstand tough environments while delivering optimal lighting results.



**Durable and high-intensity  
lighting for factories**



**Safety and efficiency in  
industrial environments**



## Power Backup Solutions



Ensure uninterrupted operations with Excel's reliable power backup solutions. Our advanced UPS systems are designed to provide seamless power support for critical applications, safeguarding your equipment and data during outages. With a focus on efficiency and performance, our UPS solutions deliver consistent power, allowing your business to maintain productivity without interruption. Whether for healthcare facilities, data centers, or industrial applications, Excel is committed to delivering dependable power solutions that keep your operations running smoothly. Trust us to protect your vital systems and enhance your resilience against power disruptions.



**Reliable power solutions for critical applications**



**Ensures uninterrupted operations**

# Residential Power Backup Solutions



Ensure peace of mind at home with Excel's reliable power backup solutions. Our UPS systems are designed specifically for residential use, providing seamless protection against power outage and fluctuations. With easy installation and low maintenance requirements, our systems integrate effortlessly into your home, keeping your essential devices and appliances running smoothly. Whether it's for your home office, entertainment systems, or medical equipment, our UPS solutions offer the security you need to maintain your daily activities without interruption. Trust Excel to safeguard your home and provide you with the comfort of uninterrupted power.



**Home power backup  
solutions for peace of mind**



**Easy installation  
and maintenance**



## Industrial Batteries



Excel offers high-capacity industrial batteries designed to meet the demanding needs of various industrial applications. Our batteries provide long-lasting performance and reliability, ensuring that your operations run smoothly without interruptions. Engineered for durability, they are capable of withstanding harsh environments and heavy usage, making them ideal for all industrial sectors. With advanced technology and superior construction, our industrial batteries deliver consistent power and efficiency, helping you maximise productivity and minimise downtime. Trust Excel for robust battery solutions that support your industrial operations with confidence and dependability.



**High-capacity solutions for industrial applications**



**Long-lasting performance and reliability**

## Automotive Batteries

Excel provides reliable automotive batteries for all types of vehicles. Our batteries utilize advanced technology to enhance performance, ensuring your vehicle starts smoothly and operates efficiently under various conditions. With a focus on durability and longevity, our automotive batteries are engineered to withstand the rigors of daily driving and extreme weather. Whether for personal cars, trucks, or commercial vehicles, you can trust Excel to provide the dependable power you need for a seamless driving experience. Choose our automotive batteries for reliability and performance on the road.



**Reliable power  
for vehicles**

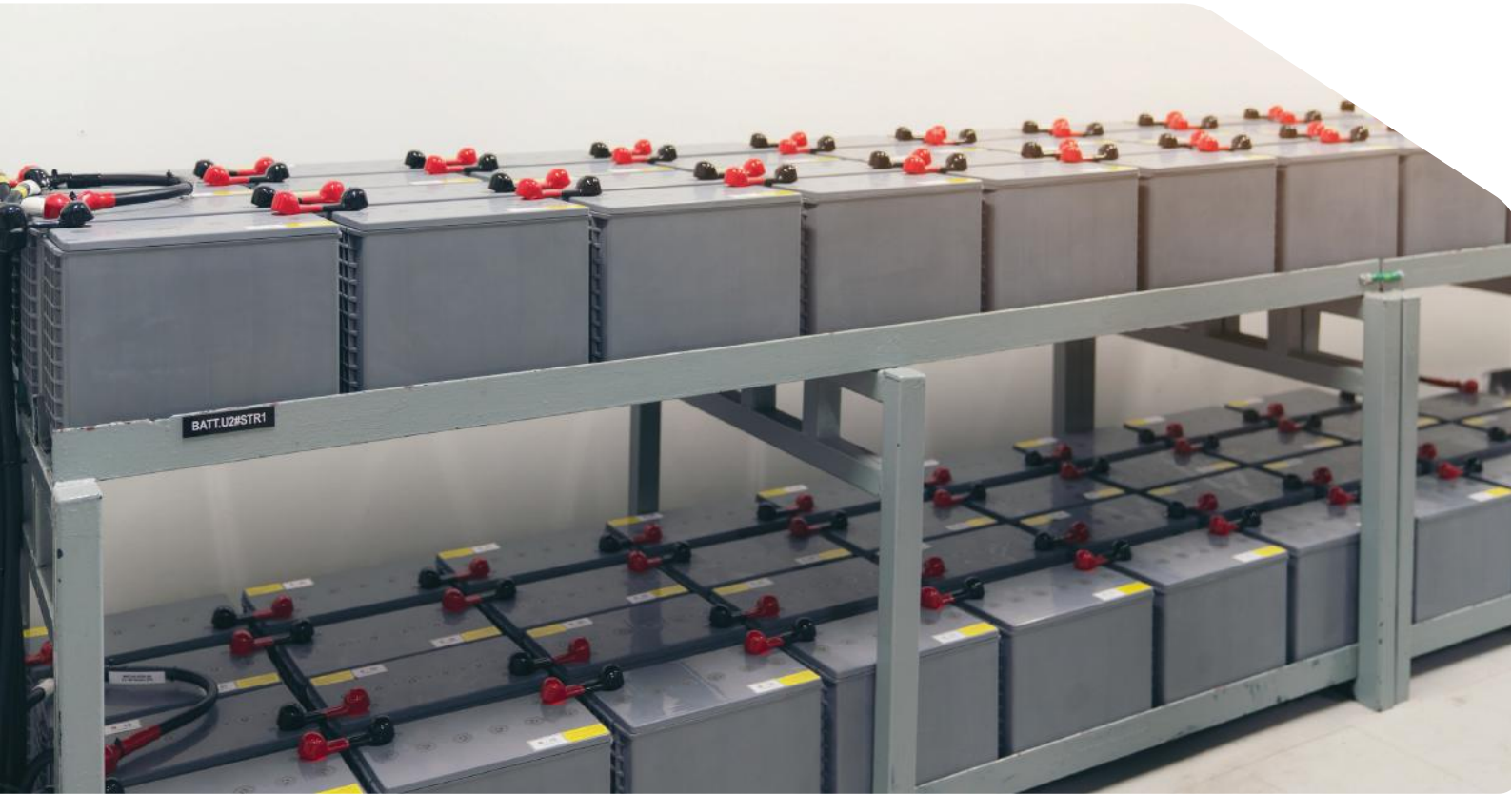


**Advanced technology for  
enhanced performance**





## UPS Batteries



Excel offers UPS Exide EI & LMS specifically designed for optimal performance in uninterruptible power supply systems. Our batteries ensure a consistent power supply during outage, providing the reliability you need to protect your critical equipment and data. Engineered for efficiency and longevity, these batteries support seamless transitions during power interruptions, allowing your systems to remain operational without disruption. With advanced technology and robust construction, our UPS batteries are ideal for data centers, healthcare facilities, and industrial applications. Trust Excel to deliver the dependable power solutions that keep your operations running smoothly, even in the face of unexpected power outage.



**Designed for optimal  
performance in UPS systems**



**Ensures consistent power  
supply during outages**

## Residential Batteries/Inverters



Excel's offers innovative energy storage solutions for homes, designed to enhance your energy independence and efficiency. Our residential batteries and inverters provide reliable power storage, allowing you to harness and utilize renewable energy sources such as solar and wind. By storing excess energy generated during peak production times, our systems ensure that you have a consistent power supply available when you need it most. With easy installation and user-friendly operation, our solutions support sustainable living while reducing energy costs. Trust Excel to empower your home with cutting-edge technology for a greener, more resilient future.



**Energy storage  
solutions for homes**



**Supports renewable  
energy systems**



# SOLAR SOLUTIONS

## Rooftop Solar Systems

Excel's offers efficient rooftop solar systems designed for both residential and commercial buildings. Our solar solutions harness the power of the sun to generate clean, renewable energy, significantly reducing electricity bills and minimizing your carbon footprint. With advanced technology and high-quality components, our systems ensure optimal energy production and reliability, allowing you to take control of your energy consumption. Easy to install and maintain, our rooftop solar systems contribute to a sustainable future while providing long-term savings. Trust Excel to empower your property with innovative solar solutions that benefit both your wallet and the environment.



**Efficient energy generation for  
residential and commercial buildings**



**Reduces electricity bills  
and carbon footprint**



## Solar Inverters



Excel offers high-quality solar inverters that play a crucial role in converting solar energy into usable electricity for your home or business. Our inverters are designed to ensure optimal performance of solar systems, maximizing energy production and efficiency. With advanced technology, our solar inverters monitor and manage the energy flow, allowing you to make the most of your renewable energy resources. They are compatible with various solar panel configurations and are built to withstand different environmental conditions, ensuring reliability and longevity. Trust Excel to provide the essential components that enhance your solar energy system and contribute to a sustainable future.



**Converts solar energy  
into usable electricity**



**Ensures optimal  
performance of solar systems**





Excel offers high-efficiency solar PV modules designed to deliver maximum energy output for both residential and commercial applications. Our solar panels are engineered with advanced technology to capture sunlight effectively, ensuring optimal performance even in varying weather conditions. With durable and weather-resistant designs, these modules are built to withstand the elements, providing long-lasting reliability and efficiency. By investing in our solar PV modules, you can harness the power of renewable energy, reduce your electricity costs, and contribute to a more sustainable future. Trust Excel to provide the quality solar solutions you need for effective energy generation.



**High-efficiency solar panels for maximum energy output**



**Durable and weather-resistant designs**



# AVARTAN DIGITAL EXCEL'S ALLIED PARTNER

Empowering your business to achieve higher productivity and streamlined processes with their services and solutions.

## Our Services



### IT Services

Enhance customer reach with our digital solutions, boost satisfaction through strategic consulting, and optimize overall IT functionality.



### IT Solutions

Offer solutions that streamline operations with Document Management Systems, Contract Management, and cater specifically to the needs of Human Resources and Finance departments.



### Non-IT Services

We provide a full range of non-IT solutions to boost efficiency and streamline processes in multiple industries.



SCAN FOR MORE INFO



Excel's Allied business services cover a broad spectrum, spanning both IT and non-IT domains. We are dedicated to driving innovation, enhancing processes, boosting efficiency, and ultimately, elevating productivity.

## Digital Transformation

Digital innovation labs, business model transformation, cloud-native application development, digital workplace solutions, enterprise mobility development and maintainance.



## Technology Adoption and Modernization

Cloud adoption, AI and machine learning integration, legacy system modernization



## Cybersecurity and Risk Management

Threat intelligence, incident response, security information and event management (SIEM), compliance management



## Agile Development and DevOps

Agile project management, continuous integration/continuous deployment (CI/CD), DevOps tool integration, agile coaching.



## Customer Experience Enhancement and Engagement

Personalized customer journeys, omnichannel support, AI-driven customer service, customer analysis, Branding and Digital Marketing.



## Data Analytics and Insights

Predictive analytics, Data Engineering, Data governance, customer behavior analysis, real-time data monitoring



## Automation and Process Optimization

Robotic Process Automation (RPA), workflow automation, process mining, continuous process improvement



## Strategic Consulting and Roadmaps

Digital transformation consulting, IT strategy development, roadmap planning, change management



## NON-IT Services

- ◆ Document Scanning/Digitization
- ◆ Book Scanning
- ◆ Medical Records Scanning
- ◆ Outbound Contact Center
- ◆ Inbound Contact Center
- ◆ Resource Deployment
- ◆ Data Management Services
- ◆ Data Entry
- ◆ Reconciliation
- ◆ Audit

## Solutions and Products

- ◆ Document Management System
- ◆ Accounts Payable Solutions
- ◆ Contract Management
- ◆ Physical File Movement Tracker
- ◆ SAAS-based Patient Records Management System
- ◆ Vendor Onboarding

## Hardware

- ◆ ISV Partner of Kodak Production Scanners





Excel's Allied Non-IT Services offer a comprehensive suite of solutions designed to enhance operational efficiency and streamline processes across various industries.

**Document Scanning/Digitization services include:**

- Document Scanning: Transforming physical documents into digital formats for easy access and storage.
- Book Scanning: Preserving books in digital form, making them accessible while maintaining their integrity.
- Medical Records Scanning: Ensuring that medical records are digitized securely, facilitating better patient care and compliance.

**Contact Center Services encompass:**

- Outbound Contact Center: Engaging customers proactively through calls and outreach.
- Inbound Contact Center: Providing support and assistance to customers through incoming calls.
- Resource Deployment ensures that the right personnel are allocated to meet business needs effectively.

**Data Management Services include:**

- Data Entry: Accurate input of data into systems.
- Reconciliation: Ensuring data consistency across platforms.
- Audit: Conducting thorough checks to maintain data integrity.

**Solutions and Products offered by Excel include:**

- Document Management System: Streamlining document storage and retrieval.
- Accounts Payable Solutions: Automating and managing payment processes.
- Contract Management: Efficiently handling contracts from creation to execution.
- Physical File Movement Tracker: Monitoring the movement of physical files for accountability.
- SAAS-based Patient Records Management System: Managing patient records securely and efficiently.
- Vendor Onboarding: Simplifying the process of integrating new vendors.
- Hardware partnerships include being an ISV partner of Kodak Production Scanners, ensuring high-quality scanning solutions.

# EXEMPLARY SOLUTIONS FOR WORKSPACES

## OUR ACHIEVEMENTS

Entrusted to work and uphold protocol within corporate office among high-level executives." "Organized database to track business contacts and was commended for attention to detail and accuracy." "Broadened and maintained an extensive network of contacts and clients."

» LED LIGHTING » UPS

» BATTERIES » SOLAR PANELS

## OUR CLIENTS



## Factory Address

Gala No. 106-114, Pushparaj Industrial Estate,  
Naikpada, Vasai (E), Mumbai-401208

## Contact Details

**Excel Battery Point**

**Mob: +91 94483 97010/97317 64360**

[globalexcel@excelpowerworld.com](mailto:globalexcel@excelpowerworld.com)